

## Troubleshooting Guide

- mechanical -



*Xperia™ Z*

*C6602, C6603, C6606, C6616,  
L36h*

## CONTENTS

<b>1</b>	<b>Problem Areas .....</b>	<b>4</b>
1.1	Power.....	4
1.1.1	Will not power on or will switch off randomly.....	4
1.2	Keys.....	7
1.2.1	Back, Home, Menu and Multitask Keys .....	7
1.2.2	Volume Key .....	7
1.3	Touch Screen.....	9
1.3.1	Touch Screen malfunction.....	9
1.4	Display.....	10
1.4.1	Graphics & Illumination .....	10
1.5	LED/Illumination .....	12
1.5.1	LED .....	12
1.5.2	Illumination .....	12
1.6	Speaker .....	13
1.6.1	Loudspeaker .....	13
1.7	Earphone.....	15
1.7.1	Earspeaker .....	15
1.8	Microphone .....	16
1.8.1	Microphone .....	16
1.8.2	Secondary Microphone .....	17
1.9	Vibrator.....	18
1.10	Camera .....	19
1.10.1	Camera defects.....	19
1.10.2	Secondary Camera .....	20
1.11	Flash LED.....	21
1.11.1	Flash LED not flashing.....	21
1.12	Bluetooth.....	22
1.12.1	Bluetooth connection failure .....	22
1.13	WLAN.....	23
1.13.1	WLAN connection failure .....	23
1.14	NFC .....	24
1.14.1	NFC malfunctions .....	24
1.15	GPS.....	25
1.15.1	GPS malfunctions.....	25
1.16	Compass .....	26
1.16.1	Compass fails .....	26
1.17	Accelerometer .....	26
1.17.1	Accelerometer test fails .....	26
1.18	Gyroscope.....	26
1.18.1	Gyroscope test fails .....	26
1.19	Ambient Light Sensor .....	27
1.19.1	Light Sensor malfunctions .....	27

<b>1.20 Proximity Switch .....</b>	<b>28</b>
1.20.1 Proximity switch malfunctions.....	28
<b>1.21 Water Resistance .....</b>	<b>29</b>
1.21.1 Water Resistance fails.....	29
<b>1.22 Real Time Clock.....</b>	<b>33</b>
1.22.1 Real Time Clock test fails .....	33
<b>1.23 Total call time .....</b>	<b>33</b>
1.23.1 Total call time fails.....	33
<b>1.24 Storage .....</b>	<b>34</b>
1.24.1 Storage not detected.....	34
<b>1.25 Security .....</b>	<b>35</b>
1.25.1 Security fails .....	35
<b>1.26 FM Radio .....</b>	<b>36</b>
1.26.1 No/Poor FM Radio reception .....	36
<b>1.27 TV-Out Test .....</b>	<b>37</b>
1.27.1 TV-Out test fails .....	37
<b>1.28 Audio Jack .....</b>	<b>38</b>
1.28.1 Sound or microphone problem with accessory connected to Audio Jack.....	38
<b>1.29 SIM .....</b>	<b>39</b>
1.29.1 SIM not detected.....	39
1.29.2 Incorrect SIM indicated .....	39
<b>1.30 Charging (USB and Easy charger).....</b>	<b>40</b>
1.30.1 Battery will not charge .....	40
<b>1.31 Data Communication .....</b>	<b>41</b>
1.31.1 Data transfer via System Connector fails.....	41
<b>1.32 Network &amp; Signal.....</b>	<b>42</b>
1.32.1 No/Poor signal .....	42
<b>2 Revision History .....</b>	<b>45</b>

- You shall always after verifying the problem, start the trouble shooting with the Emma Service “Refurbish”.
- Software release information about improvements are found: [www.sonymobile.com/Update](http://www.sonymobile.com/Update)

## 1 Problem Areas

### 1.1 Power

#### 1.1.1 Will not power on or will switch off randomly

##### Check:

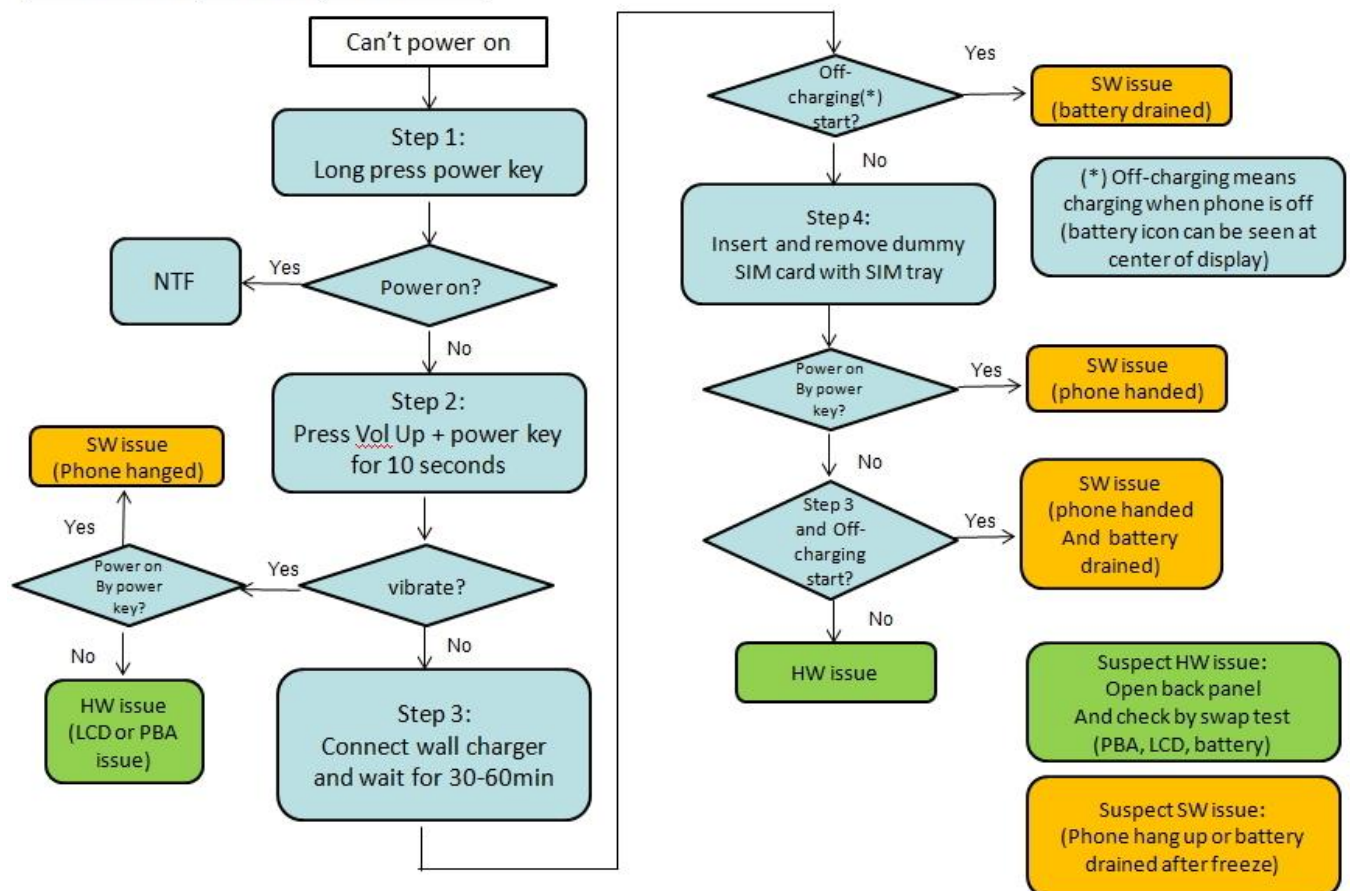
Check whether the phone vibrates by pressing the Power key.

##### Action:

1. If activation of the Vibrator is detected, refer to section 1.4 'Display'.
2. If NO activation of the Vibrator is detected, follow the below process.



#### How to analyze can't power on



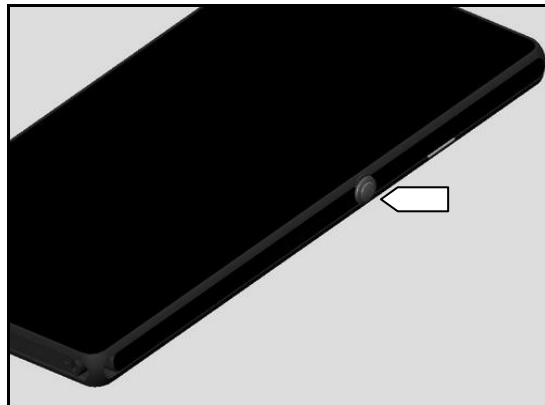
## Problem Areas: Power

### Check:

Inspect the power key

### Action:

1. If dirty – clean it.
2. If the Power key is damaged – replace the Front Assembly.

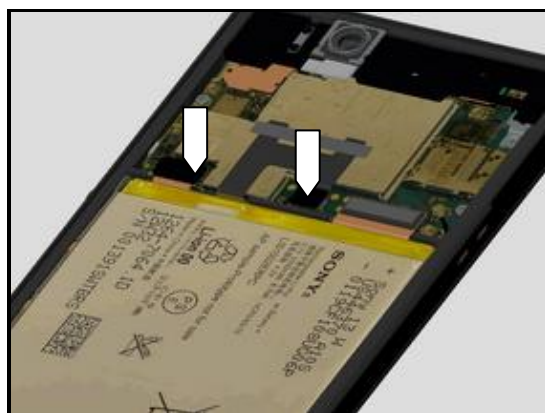


### Check:

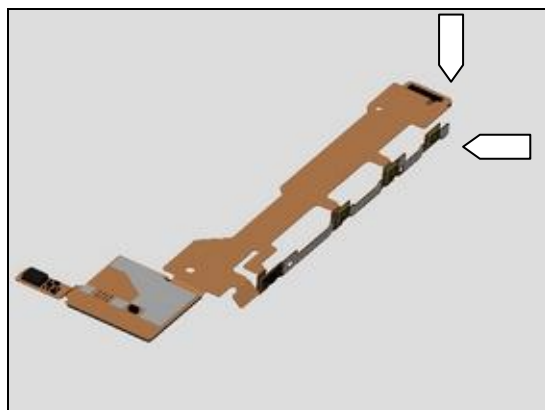
Inspect the BtB connector and key switch on the FPC Assembly Relay FPC, the BtB connector on the Battery 2330.0 mAh and the two BtB connectors on the Main PBA.

### Action:

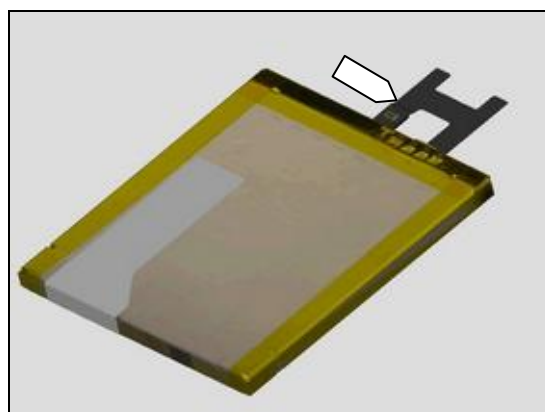
1. Remove and reconnect Battery 2330.0 mAh BtB connector, test charging and then test powering on the unit.
2. If not properly connected – disconnect and reconnect connectors.
3. If dirty or oxidized – clean connectors.



4. If the key switch, BtB connector or the FPC Assembly Relay FPC is damaged – replace FPC Assembly Relay FPC.

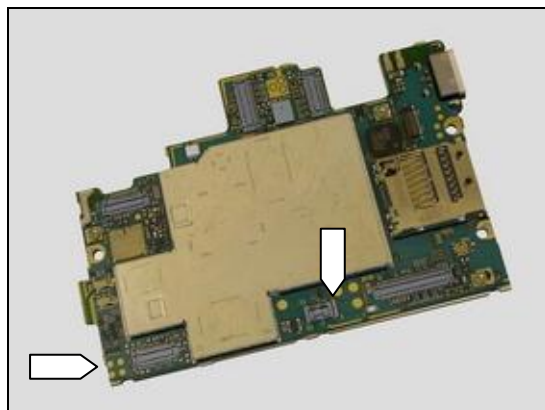


5. If Battery 2330.0 mAh or its BtB contact is damaged – replace Battery 2330.0 mAh.



## **Problem Areas: Power**

6. Replace Main PBA.



## Problem Areas: Keys

### 1.2 Keys

#### 1.2.1 Back, Home, Menu and Multitask Keys

**Action:**

1. Refer to the section 1.3 'Touch Screen'.



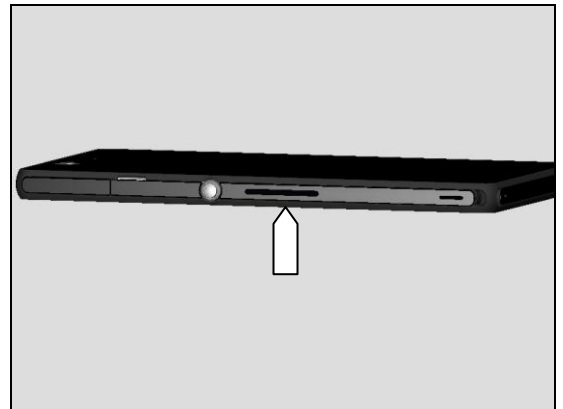
#### 1.2.2 Volume Key

**Check:**

Inspect the external area of the Keys.

**Action:**

If dirty – clean it.

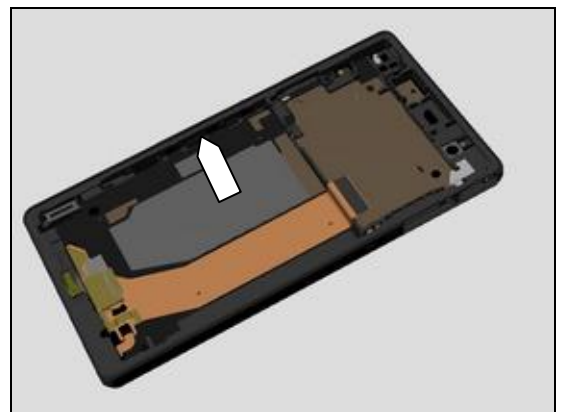


**Check:**

Inspect the volume keys on Front Assembly.

**Action:**

1. If dirty – clean them.
2. If the keys are damaged – Front Assembly.

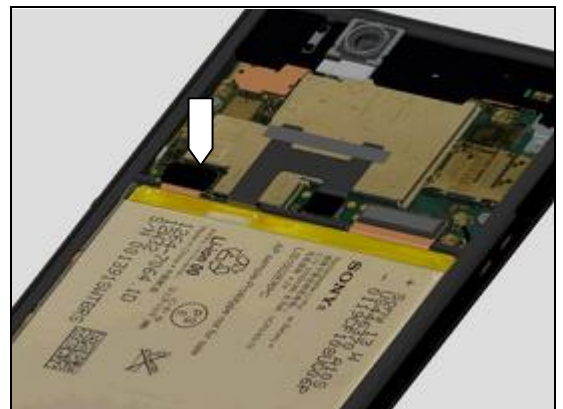


**Check:**

Inspect the BtB connector and key switches on the FPC Assembly Relay FPC and the BtB connector on the Main PBA.

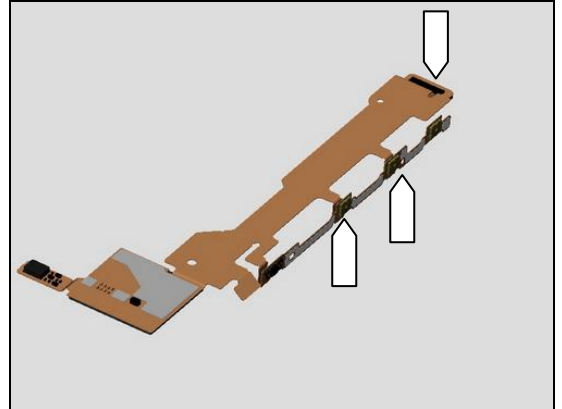
**Action:**

1. If not properly connected – disconnect and reconnect connector.
2. If dirty or oxidized – clean it.

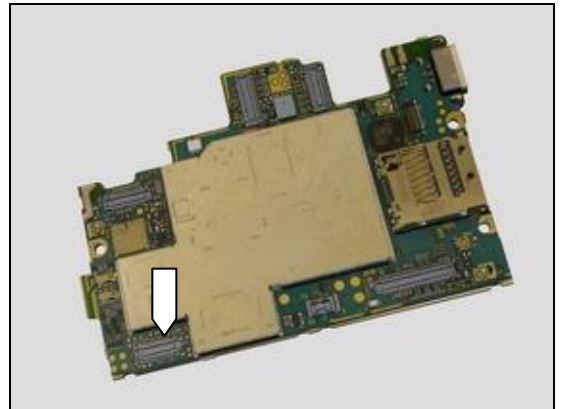


## Problem Areas: Keys

3. If the key switches, the BtB connector or the FPC Assembly Relay FPC is damaged – replace the FPC Assembly Relay FPC.



4. Replace Main PBA.





## Problem Areas

### 1.3 Touch Screen

#### 1.3.1 Touch Screen malfunction

**Check:**

Inspect the touch screen.

**Action:**

If dirty – clean it.



**Check:**

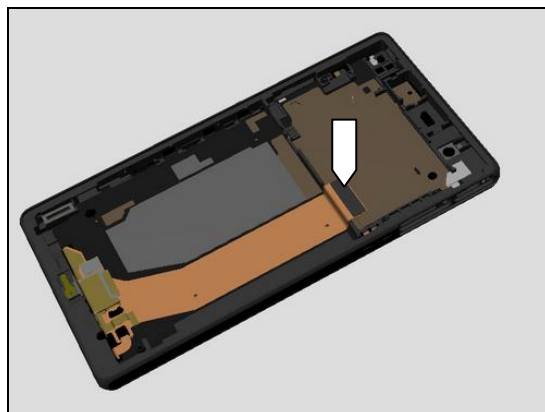
Inspect the BtB connector on the Front Assembly and the BtB connector on the Main PBA.

**Action:**

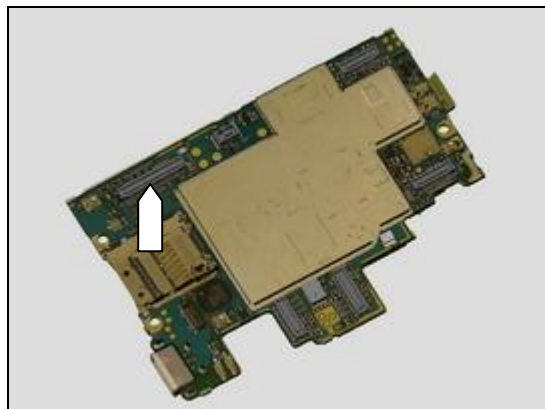
1. If not properly connected – disconnect and reconnect connector.
2. If dirty or oxidized – clean it.



3. If BtB connector on Front Assembly is damaged – replace the Front Assembly.



4. Replace Main PBA.



## Problem Areas

### 1.4 Display

#### 1.4.1 Graphics & Illumination

**Check:**

Check whether the phone vibrates after the Power key has been pressed.

**Action:**

1. If the phone does not vibrate, refer to section 1.1 'Power'.
2. If the phone vibrates, perform force shut down (Press Power key + Volume Up for 10sec) and try start the phone again with Power key.

3. Do a "Refurbish" in Emma (Secure that the battery is charged!, see 1269-3536 Test Instruction - mechanical chapter 2.3.2 (Charging via USB and Easy Charger).

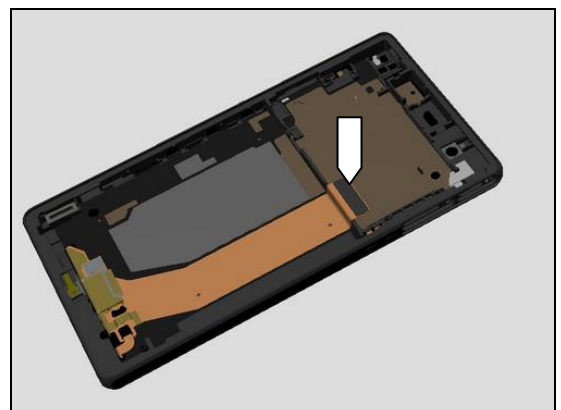
**Check:**

Inspect the BtB connector on the Front Assembly and the BtB connector on the Main PBA.

**Action:**

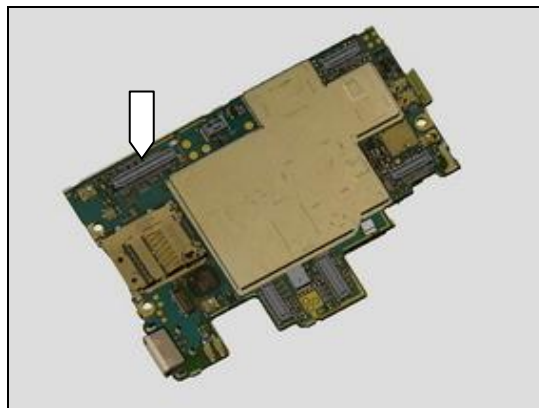
1. Remove and reconnect Front Assembly connector, test charging and then test powering on the unit.
2. If not properly connected – disconnect and reconnect connector.
3. If dirty or oxidized – clean connector.

3. If BtB connector on Front Assembly is damaged – replace the Front Assembly



## **Problem Areas: Display**

4. Replace Main PBA.



## Problem Areas:

### 1.5 LED/Illumination

#### 1.5.1 LED

##### Check:

Inspect the external window area of the Notification LED (RGB) on the Front Assembly.

##### Action:

1. If dirty – clean it.
2. If the external window area is damaged – replace the Front Assembly.

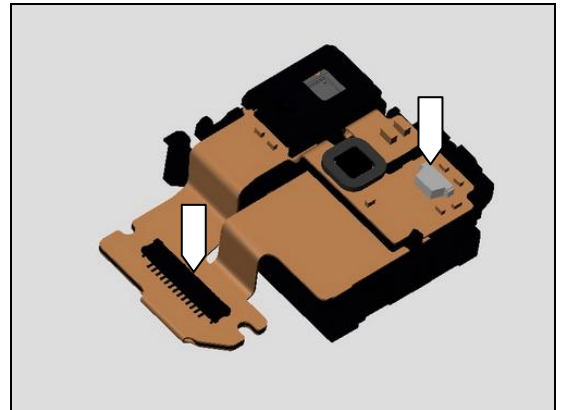


##### Check:

Inspect the connector and Notification LED on the FPC Assembly Top RoW.

##### Action:

1. If not properly connected- disconnect and reconnect connector.
2. If FPC Assembly Top RoW dirty or clogged – clean it.
3. If FPC Assembly Top RoW is damaged – replace it
4. Replace Main PBA.



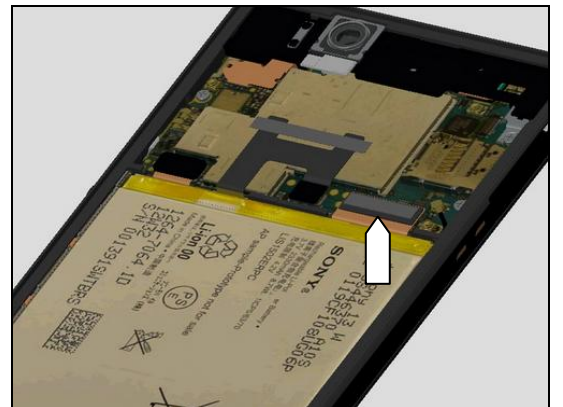
#### 1.5.2 Illumination

##### Check:

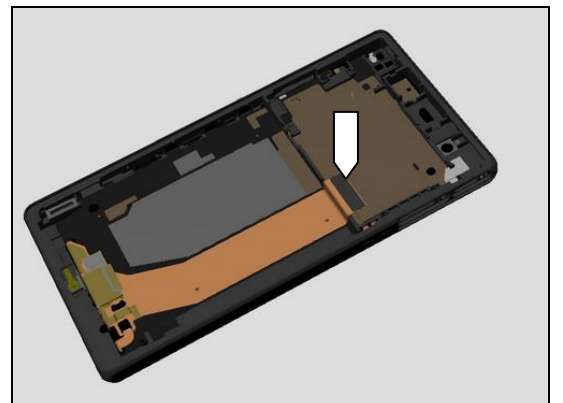
Inspect the BtB connector on the Front Assembly and the BtB connector on the Main PBA.

##### Action:

1. If not properly connected – disconnect and reconnect connector.
2. If dirty or oxidized – clean connector.



3. If FPC Assembly Relay FPC is damaged – replace it.
4. Replace Main PBA



## Problem Areas

### 1.6 Speaker

#### 1.6.1 Loudspeaker

**Check:**

Inspect the loudspeaker's external port on the right panel.

**Action:**

1. If the loudspeaker's external port is clogged – clean it.
2. If the loudspeaker's external port is damaged – replace the Front Assembly.
- 3 If the Mesh Loud Speaker dirty and clogged-clean it.
- 4 If failed in the above step 3 - replace the Mesh Loud Speaker.



**Check:**

Inspect the contact pads and BtB connector on the FPC Assembly Relay FPC and the BtB connector on the Main PBA.

**Action:**

1. If dirty or oxidized – clean them.
2. If not properly connected- disconnect and reconnect connector.

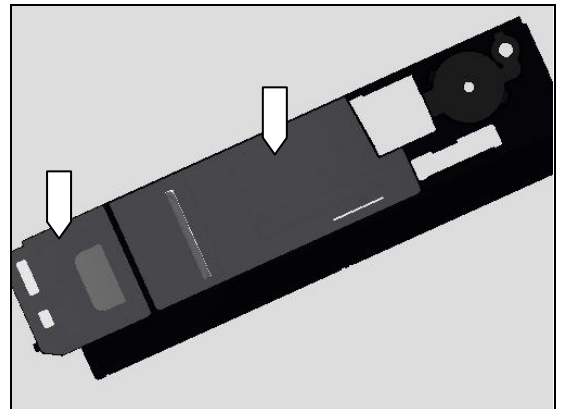


**Check:**

Inspect the loudspeaker's sealings on the Ant Main Flex RoW.

**Action:**

1. If dirty – clean them.
2. If the the Ant Main Flex RoW is damaged – replace the Ant Main Flex RoW.

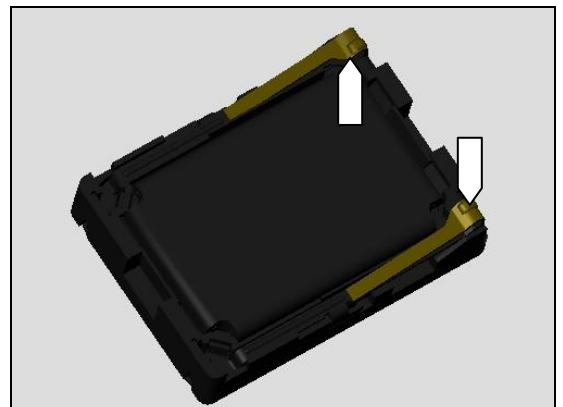


**Check:**

Inspect the contacts on the Loudspeaker 15.0 Rectangular.

**Action:**

1. If dirty or oxidized – clean them.
2. If contacts are damaged – replace the Loudspeaker 15.0 Rectangular.



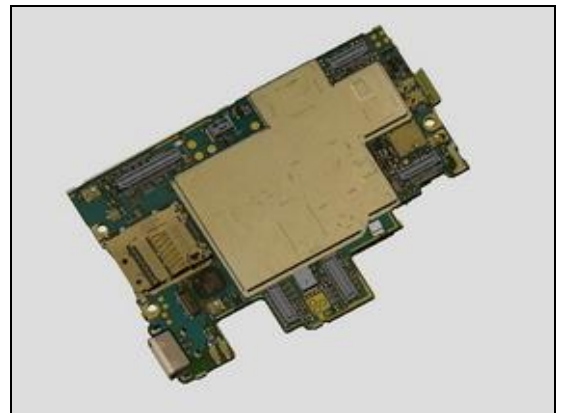
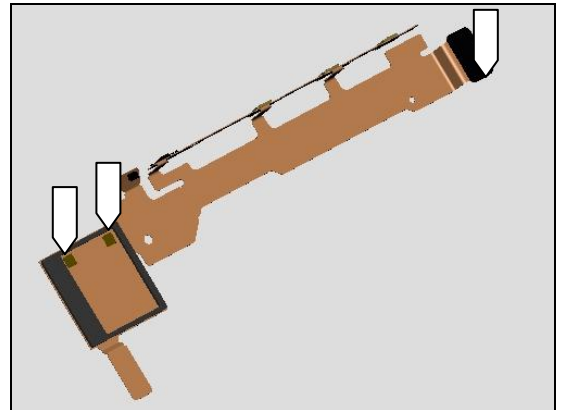
## Problem Areas: Speaker

### Check:

Inspect the contact pads and BtB connector on the FPC Assembly Relay FPC.

### Action:

1. If dirty – clean them.
2. If the FPC Assembly Relay FPC is damaged – replace it.



4. Replace Main PBA.

## Problem Areas

### 1.7 Earphone

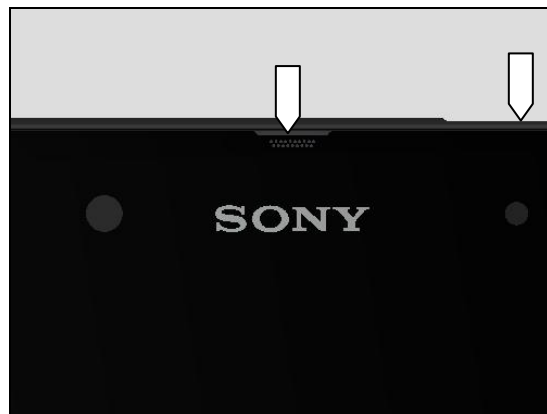
#### 1.7.1 Earspeaker

**Check:**

Inspect the Earspeaker's external port on the Front assembly and if there is no sound at all the Audio Jack.

**Action:**

1. If clogged – clean it.
2. If the port is damaged – replace the Front Assembly
3. If not prompted to insert headphones when you start FM radio without headphones - clean Audio Jack or replace FPC Assembly Top RoW.

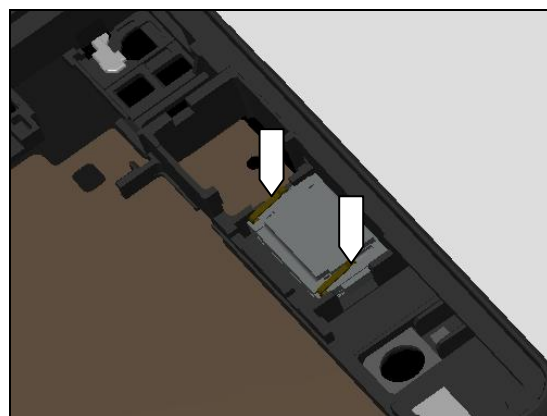


**Check:**

Inspect the pins of Ear Speaker 12.0 Rectangular\_WR

**Action:**

1. If dirty – clean them.
2. If the pins are damaged – replace the Ear Speaker 12.0 Rectangular\_WR.

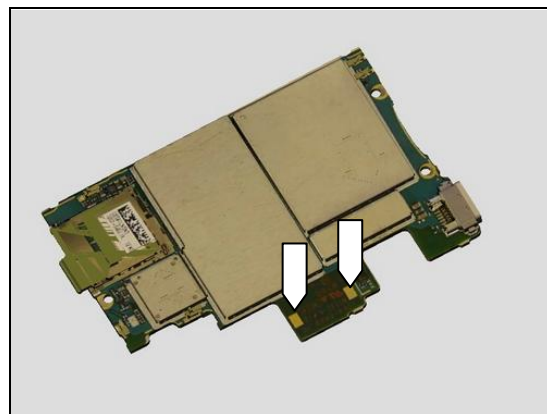


**Check:**

Inspect the Earspeaker's connector pads on the Main PBA.

**Action:**

1. If the pads are dirty/oxidized – clean them.
2. Inspect
3. Replace Main PBA.





## Problem Areas

### 1.8 Microphone

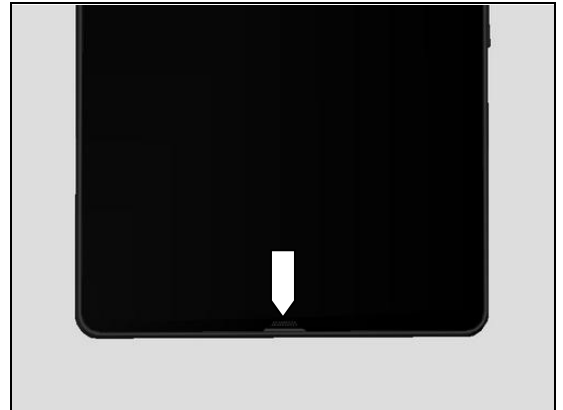
#### 1.8.1 Microphone

**Check:**

Inspect the Microphone's external port on the Front Assembly.

**Action:**

1. If clogged – clean the port.
2. If the port is damaged – replace the Front Assembly.

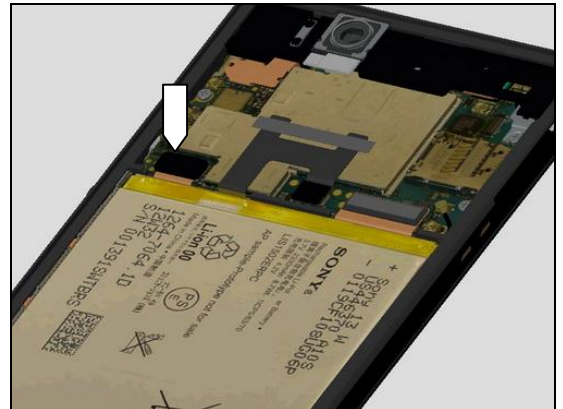


**Check:**

Inspect the contact pads and BtB connector on the FPC Assembly Relay FPC and the BtB connector on the Main PBA.

**Action:**

1. If dirty or oxidized – clean them.
2. If not properly connected- disconnect and reconnect connector.

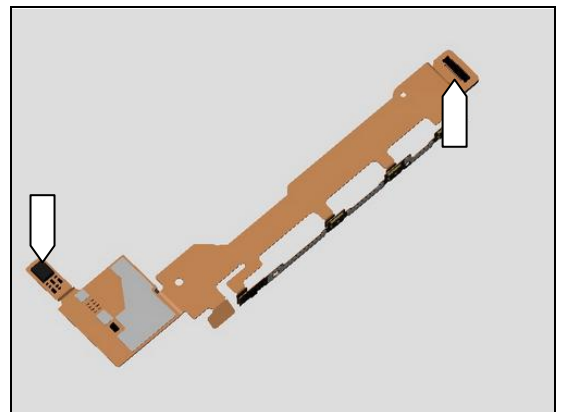


**Check:**

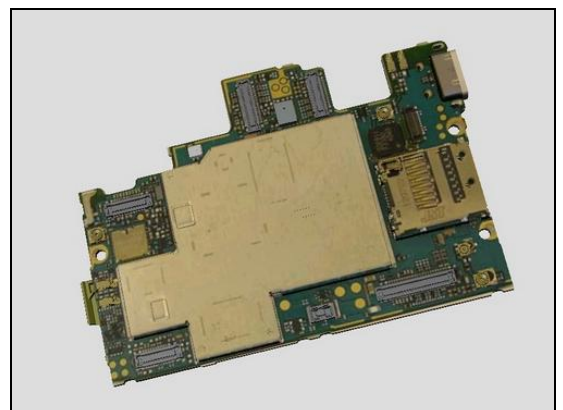
Inspect the Microphone and BtB connector on the FPC Assembly Relay FPC.

**Action:**

1. If dirty – clean them.
2. If Microphone or BtB connector is damaged – replace the FPC Assembly Relay FPC.



3. Replace the Main PBA.





## Problem Areas:

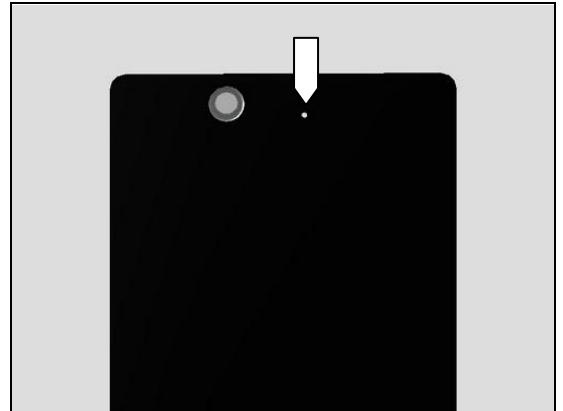
### 1.8.2 Secondary Microphone

**Check:**

Inspect the secondary microphone's external port on the Back Panel Assy.

**Action:**

1. If clogged – clean the port.
2. If the port is damaged – replace the Back Panel Assy.

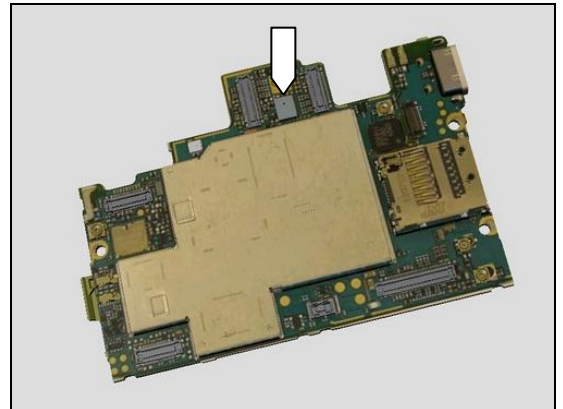


**Check:**

Inspect the secondary microphone on the Main PBA.

**Action:**

1. If dirty – clean it.
2. Replace Main PBA.



## Problem Areas

### 1.9 Vibrator

**Check:**

Inspect the BtB connector on the Front Assembly and the BtB connector on the Main PBA.

**Action:**

1. If not properly connected – disconnect and reconnect connector.
2. If dirty or oxidized – clean connector.

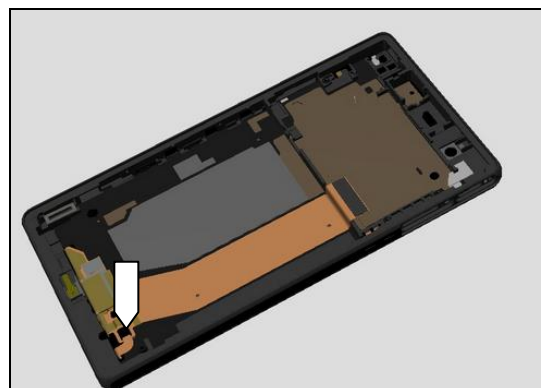


**Check:**

Inspect the connectors of the vibrator.

**Action:**

1. If not properly connected – disconnect and reconnect connector.
2. If connector on Front Assembly flex is damaged – replace the Front Assembly.
3. If Vibrator connector are damaged – replace the Vibrator



## Problem Areas

### 1.10 Camera

#### 1.10.1 Camera defects

**Check:**

Inspect the external area of camera window.

**Action:**

1. If Back Panel Assy dirty – clean it.
2. If the Back Panel Assy window damaged – replace the Back Panel Assy.
3. If Camera 13 MPixel CMOS window dirty – clean it.
4. If Camera 13 MPixel CMOS window scratched – replace the Camera 13MPixel CMOS.

**Check:**

Inspect the BtB connector of Camera 13 MPixel CMOS and the BtB connector on the Main PBA.

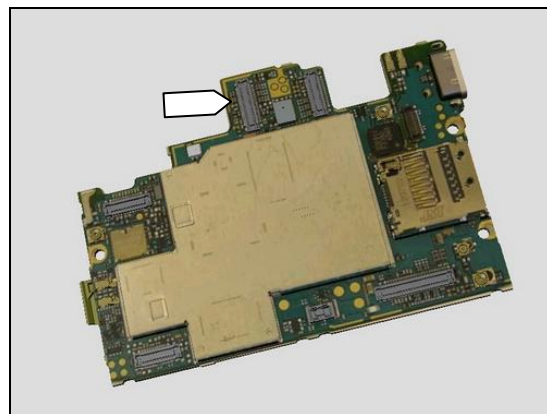
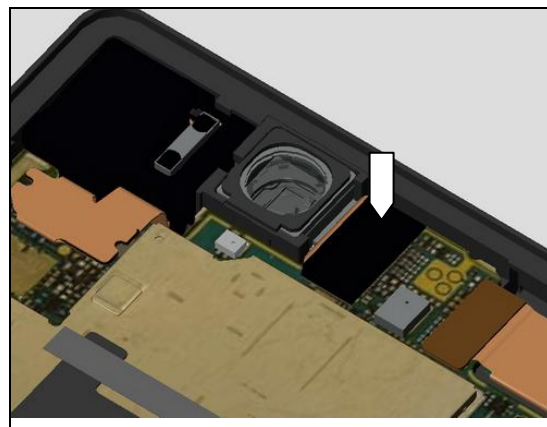
**Action:**

1. If not properly connected – disconnect and reconnect.
2. If dirty or oxidized – clean both of the BtB connectors.
3. If the Camera 13 MPixel CMOS BtB connector damaged – replace the Camera 13 MPixel CMOS.
4. If the Main PBA BtB connector damaged – replace Main PBA.

**Verify with a known functioning Camera:**

If working – replace the Camera 13 MPixel CMOS.

If not working – Replace Main PBA and reuse old Camera 13MPixel CMOS.



## Problem Areas

### 1.10.2 Secondary Camera

**Check:**

Inspect the external area of the Secondary camera window.

**Action:**

1. If Front Assembly dirty – clean it.
2. If Front Assembly window damaged – replace the Front Assembly.
3. If Camera 2.2 MPixel CMOS window dirty – clean it.
4. If Camera 2.2 MPixel CMOS scratched – replace the Camera 2.2 MPixel CMOS.

**Check:**

Inspect the BtB connector of Camera 2.2 MPixel CMOS and the BtB connector on the Main PBA.

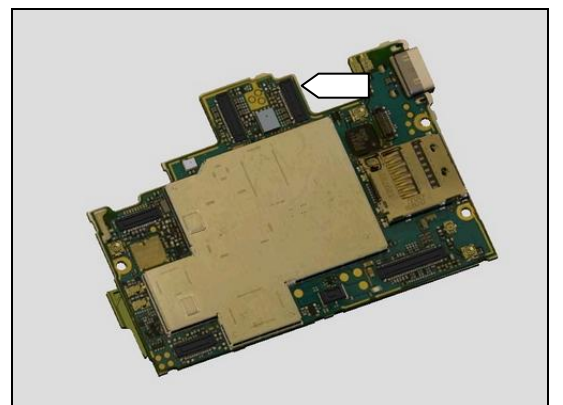
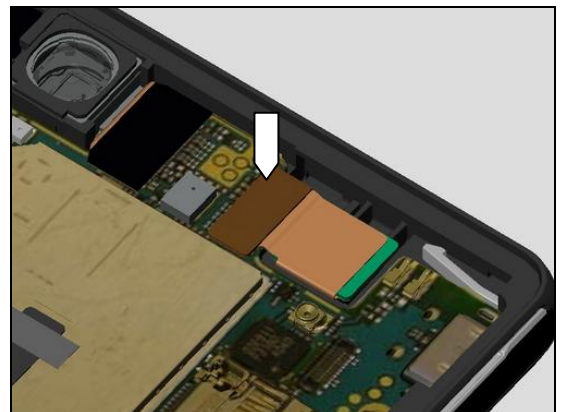
**Action:**

1. If not properly connected – disconnect and reconnect.
2. If dirty or oxidized – clean both of the BtB connectors.
3. If the Camera 2.2 MPixel CMOS BtB connector damaged – replace the Camera 2.2 MPixel CMOS.
4. If the Main PBA BtB connector damaged – replace Main PBA.

**Verify with a known functioning Secondary Camera:**

If working – replace the Camera 2.2 MPixel CMOS.

If not working – Replace Main PBA and reuse old Camera 2.2 MPixel CMOS.



## Problem Areas

### 1.11 Flash LED

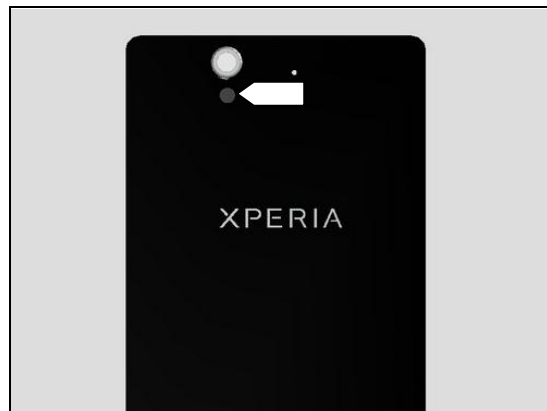
#### 1.11.1 Flash LED not flashing

**Check:**

Inspect the external area of the flash LED window.

**Action:**

1. If the flash LED window is dirty – clean it.
2. If the flash LED window scratched or damaged – replace the Back Panel Assy.

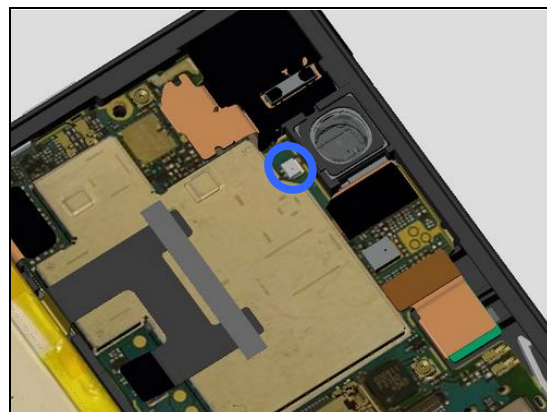


**Check:**

Inspect the flash LED on the Main PBA.

**Action:**

1. If dirty – clean it.
2. Replace Main PBA.



## Problem Areas

### 1.12 Bluetooth.

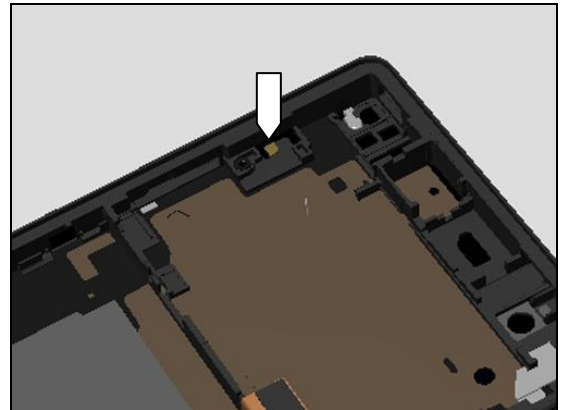
#### 1.12.1 Bluetooth connection failure

**Check:**

Inspect the WLAN, Bluetooth and GPS antenna and the connection to the Front Assembly.

**Action:**

1. If dirty – clean it.
2. If the antenna is damaged – replace the Front Assembly.

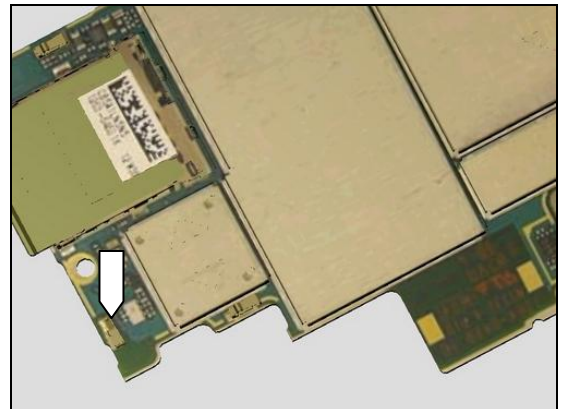


**Check:**

Inspect the WLAN, Bluetooth and GPS antenna contact pin on the Main PBA.

**Action:**

1. If dirty or oxidized – clean the pin.
2. Replace Main PBA.



## Problem Areas

### 1.13 WLAN

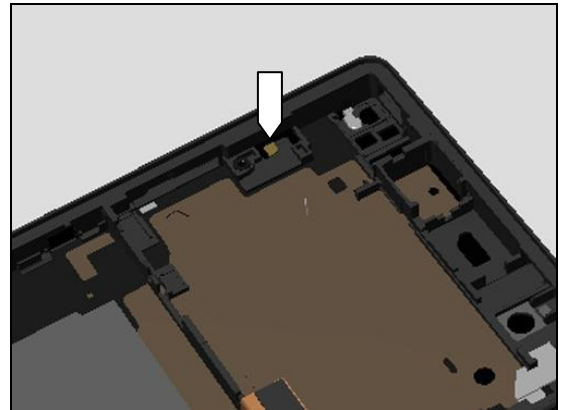
#### 1.13.1 WLAN connection failure

**Check:**

Inspect the WLAN, Bluetooth and GPS antenna and to connection to the Front Assembly.

**Action:**

1. If dirty – clean it.
2. If the antenna is damaged – replace the Front Assembly.

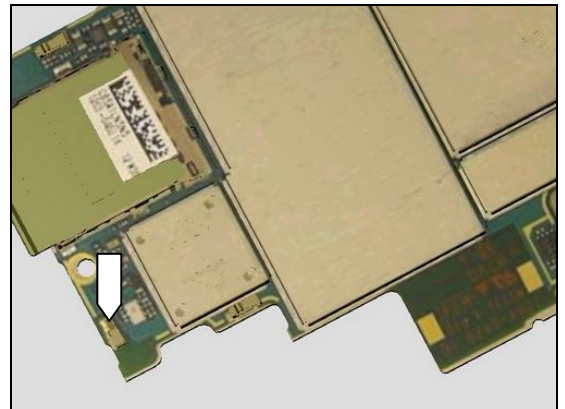


**Check:**

Inspect the WLAN, Bluetooth and GPS antenna contact pin on the Main PBA.

**Action:**

1. If dirty or oxidized – clean the pin.
2. Replace Main PBA.





## Problem Areas

### 1.14 NFC

#### 1.14.1 NFC malfunctions

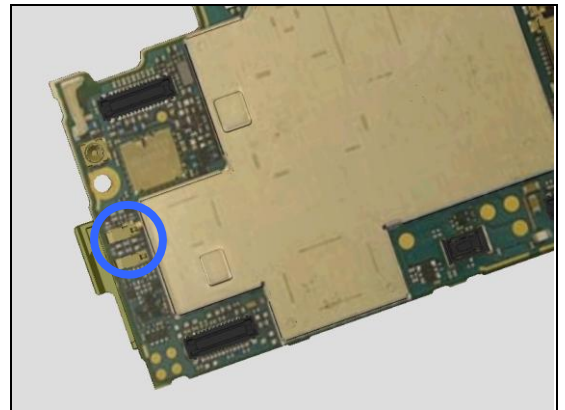
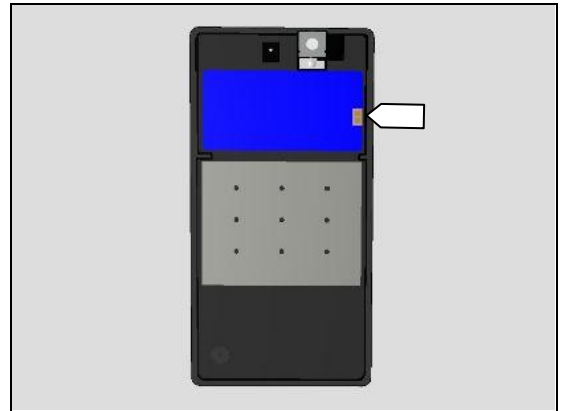
**Check:**

Inspect the NFC antenna contact pads on the Back Panel Assy and the contact pins on the Main PBA.

**Action:**

1. If dirty or oxidized – clean the pads and pins.
2. If the NFC antenna or its pads are damaged – replace the Back Panel Assy.

3. Replace Main PBA.





## Problem Areas

### 1.15 GPS

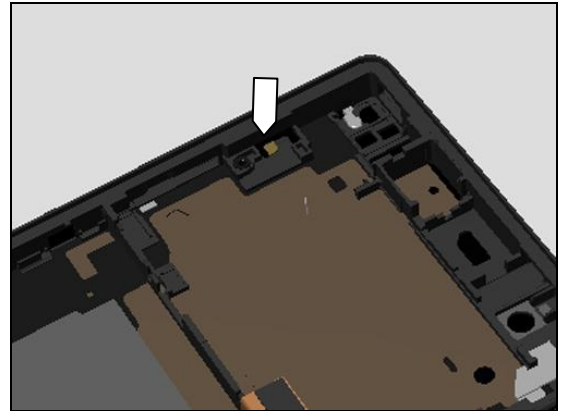
#### 1.15.1 GPS malfunctions

**Check:**

Inspect the WLAN, Bluetooth and GPS antenna and the connection to the Front Assembly.

**Action:**

1. If dirty – clean it.
2. If the antenna is damaged – replace the Front Assembly.



**Check:**

Inspect the WLAN, Bluetooth and GPS antenna contact pin on the Main PBA.

**Action:**

1. If dirty or oxidized – clean the pin.
2. Replace Main PBA.



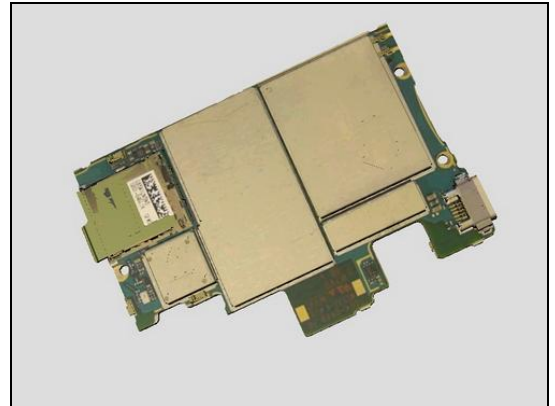
## Problem Areas

### 1.16 Compass

#### 1.16.1 Compass fails

**Action:**

Replace Main PBA.

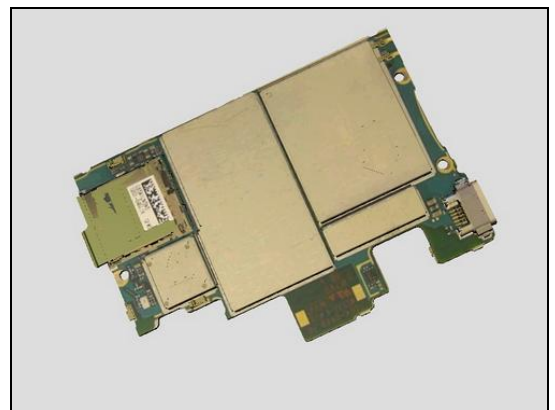


### 1.17 Accelerometer

#### 1.17.1 Accelerometer test fails

**Action:**

Replace Main PBA.

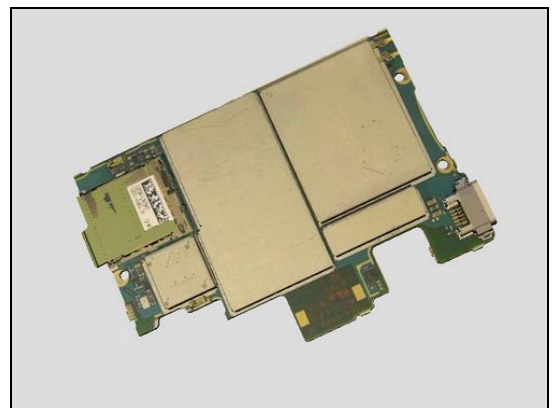


### 1.18 Gyroscope

#### 1.18.1 Gyroscope test fails

**Action:**

Replace Main PBA.



## Problem Areas

### 1.19 Ambient Light Sensor

#### 1.19.1 Light Sensor malfunctions

**Check:**

Inspect the external window area of light sensor on the Front Assembly.

**Action:**

1. If clogged – clean it.
2. If scratched or damaged – replace the Front Assembly.

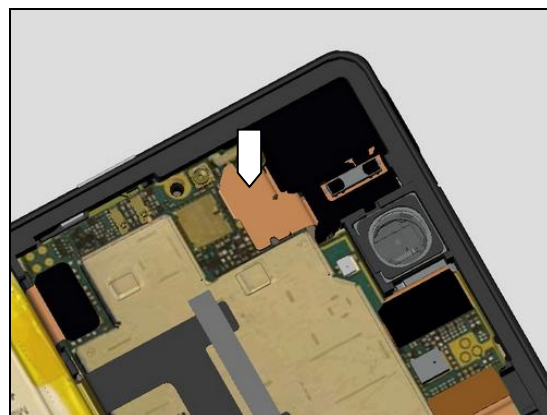


**Check:**

Inspect the BtB connector of FPC Assembly Top RoW and the BtB connector on the Main PBA.

**Action:**

1. If not properly connected – disconnect and reconnect.
2. If dirty or oxidized – clean it.

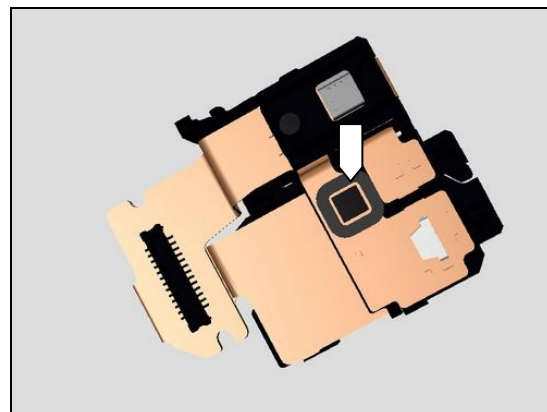


**Check:**

Inspect the FPC Assembly Top RoW.

**Action:**

1. If the light sensor is dirty – clean it.
2. If the FPC Assembly Top RoW is damaged – replace it.
3. Replace Main PBA.



## Problem Areas

### 1.20 Proximity Switch

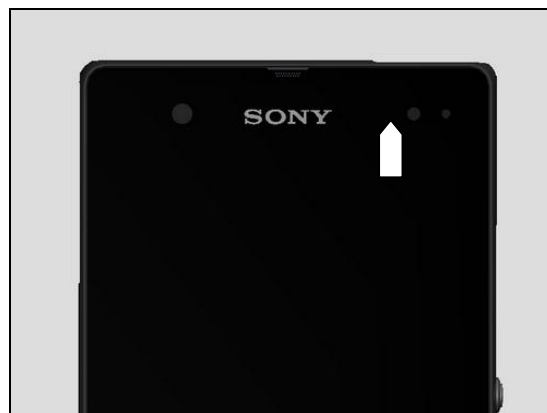
#### 1.20.1 Proximity switch malfunctions

**Check:**

Inspect the proximity switch window area and the proximity sensor window area on the Front Assembly.

**Action:**

1. If dirty – clean it.
2. If scratched or damaged – replace the Front Assembly.

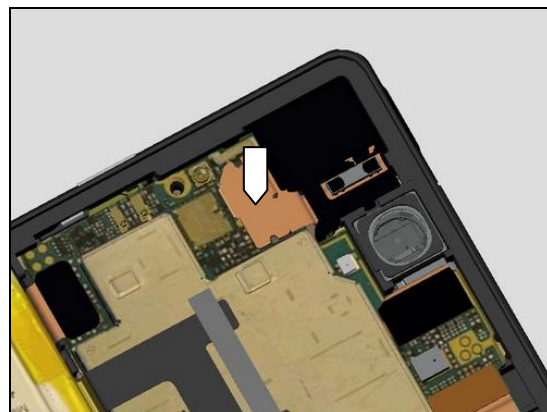


**Check:**

Inspect the BtB connector of FPC Assembly Top RoW and the BtB connector on the Main PBA.

**Action:**

1. If not properly connected – disconnect and reconnect.
2. If dirty or oxidized – clean it.

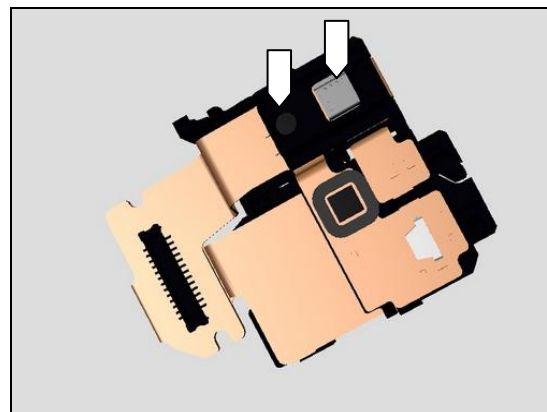


**Check:**

Inspect the FPC Assembly Top RoW.

**Action:**

1. If the sensors are dirty – clean it.
2. If the FPC Assembly Top RoW is damaged – replace it.
3. Replace Main PBA.



## Problem Areas

### 1.21 Water Resistance

#### 1.21.1 Water Resistance fails

**Check:**

Inspect that the secondary microphone is properly sealed with tape.

**Action:**

1. If dirty – clean it.
2. If scratched or damaged – replace the Back Panel Assy.

**Run the Water Resistance Test again!**



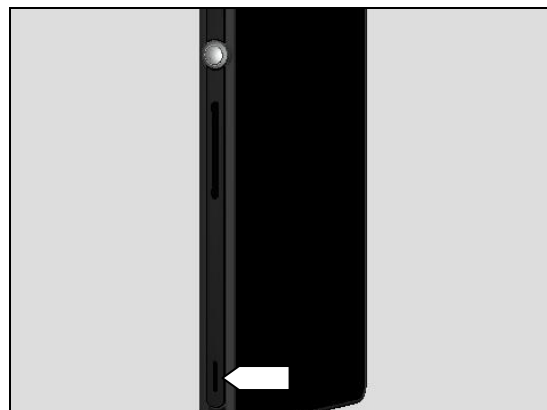
**Check:**

Inspect the loudspeaker's external port is properly sealed with tape.

**Action:**

1. If dirty – clean it.
2. If scratched or damaged – replace the Front Assembly.

**Run the Water Resistance Test again!**



**Check:**

Inspect the Cap Audio Jack Assy R.

**Action:**

1. If dirty – clean it.
2. If not properly assembled – disassemble and reassemble it.



3. If the Cap Audio Jack Assy R is damaged – replace it.

**Run the Water Resistance Test again!**



## Problem Areas

### Check:

Inspect the Cap USB Assy R.

### Action:

1. If dirty – clean it.
2. If not properly assembled – disassemble and reassemble it.



3. If the Cap USB Assy R is damaged – replace it.

**Run the Water Resistance Test again!**



### Check:

Inspect the Cap SD Assy R

### Action:

1. If dirty – clean it.
2. If not properly assembled – disassemble and reassemble it.



3. If the Cap SD Assy R is damaged – replace it.

**Run the Water Resistance Test again!**



## Problem Areas

### Check:

Inspect the Cap SIM Assy R

### Action:

1. If dirty – clean it.
2. If not properly assembled – disassemble and reassemble it.



3. If the Cap SIM Assy R is damaged – replace it.

**Run the Water Resistance Test again!**



### Check:

Inspect the Back Panel Assy

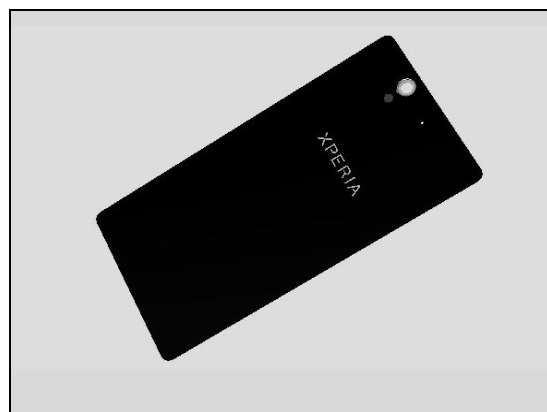
### Action:

1. If dirty – clean it.
2. If not properly assembled – disassemble and reassemble it.



3. If the Back Panel Assy is damaged – replace it.

**Run the Water Resistance Test again!**

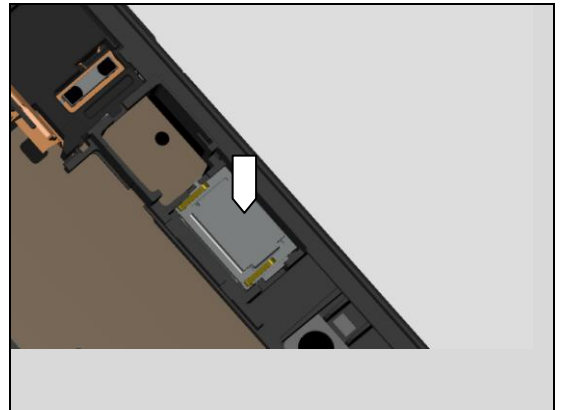


## Problem Areas

### Check:

Inspect the Ear Speaker 12.0 Rectangular\_WR.

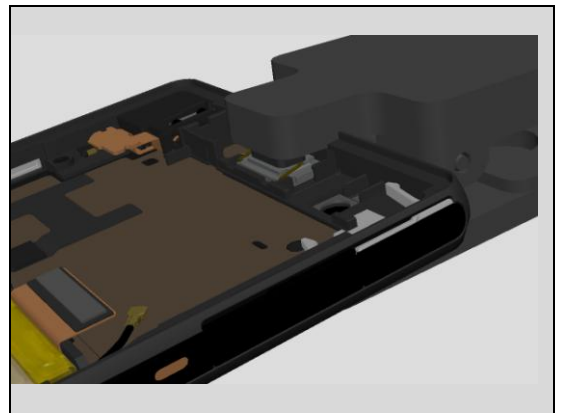
This check is only applicable for newly replaced Ear Speaker 12.0 Rectangular\_WR and new Front Assembly.



### Action:

1. If suspect that the Ear Speaker 12.0 Rectangular\_WR is not securely attached – press it only one time with the Press Tool Loudspeaker to make sure the Ear Speaker 12.0 Rectangular\_WR securely attached.

Be careful! In this action, the Ear Speaker 12.0 Rectangular\_WR can be pressed only once.



**Run the Water Resistance Test again!**



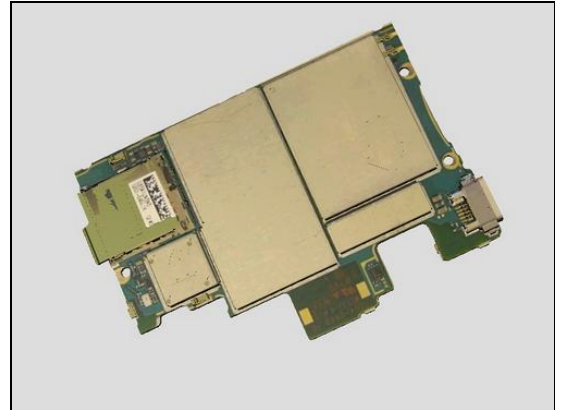
## Problem Areas

### 1.22 Real Time Clock

#### 1.22.1 Real Time Clock test fails

**Action:**

Replace Main PBA.



### 1.23 Total call time

#### 1.23.1 Total call time fails

Not a test, consumer usage information for the unit.

## Problem Areas

### 1.24 Storage

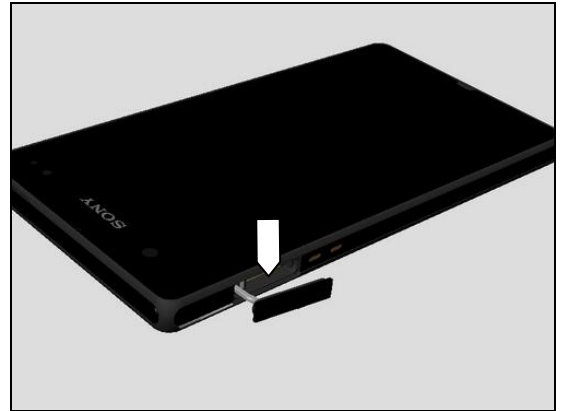
#### 1.24.1 Storage not detected

**Check:**

Inspect the external port of the memory card holder and check if a different verified memory card can be properly inserted.

**Action:**

If dirty or clogged – clean the external port.

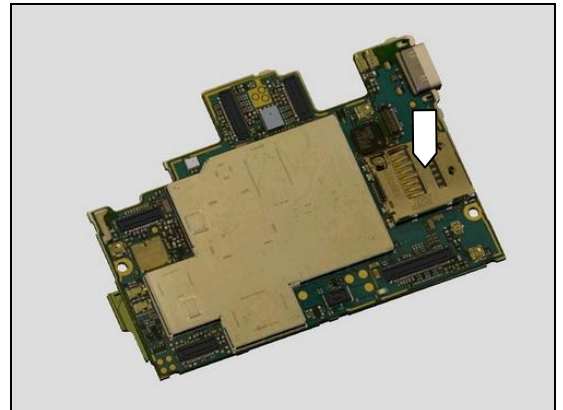


**Check:**

Inspect the memory card holder on the Main PBA.

**Action:**

1. If dirty or clogged – clean the holder.
2. Replace Main PBA.



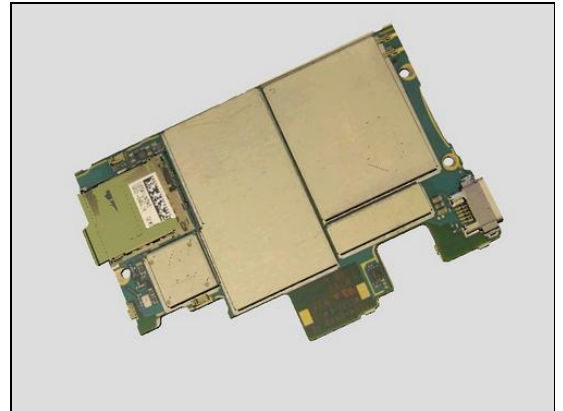
## Problem Areas

### 1.25 Security

#### 1.25.1 Security fails

**Action:**

Replace Main PBA.



## Problem Areas

### 1.26 FM Radio

#### 1.26.1 No/Poor FM Radio reception

**Check:**

Inspect the external port of the Audio Jack.

**Action:**

If dirty, clogged or oxidized – clean it.

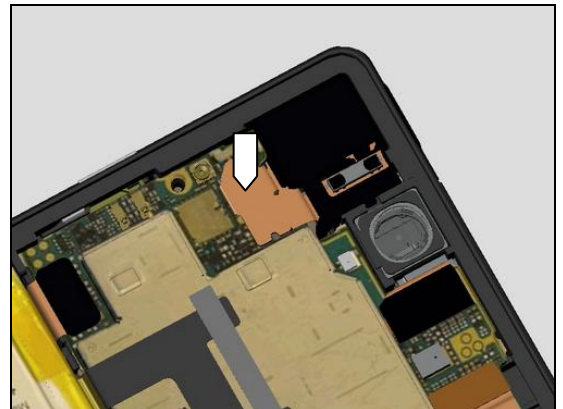


**Check:**

Inspect the BtB connector of FPC Assembly Top RoW and the BtB connector on the Main PBA..

**Action:**

1. If not properly connected – disconnect and reconnect.
2. If dirty or oxidized – clean it.



**Check:**

Inspect the FPC Assembly Top RoW.

**Action:**

1. If the FPC Assembly Top RoW is damaged – replace it.
2. Replace Main PBA.



## Problem Areas

### 1.27 TV-Out Test

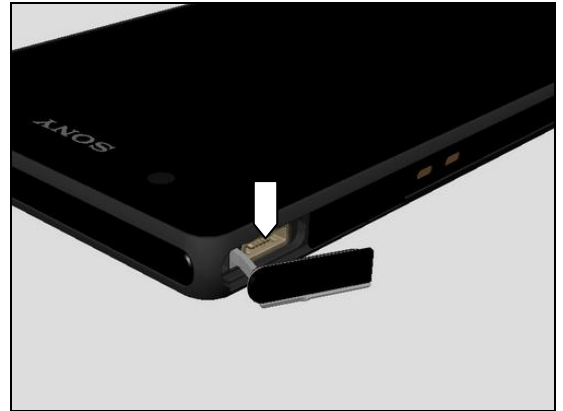
#### 1.27.1 TV-Out test fails

**Check:**

Inspect the USB connector.

**Action:**

1. If dirty, clogged or oxidized – clean the connector.
2. Replace Main PBA.



## Problem Areas

### 1.28 Audio Jack

#### 1.28.1 Sound or microphone problem with accessory connected to Audio Jack

**Check:**

Inspect the external port of the Audio Jack.

**Action:**

If dirty, clogged or oxidized – clean it.

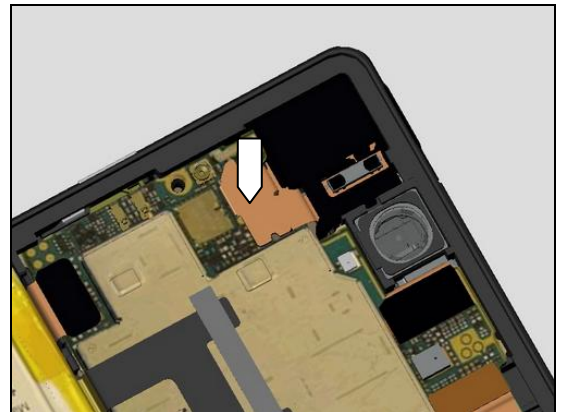


**Check:**

Inspect the BtB connector of FPC Assembly Top RoW and the BtB connector on the Main PBA..

**Action:**

1. If not properly connected – disconnect and reconnect.
2. If dirty or oxidized – clean it.

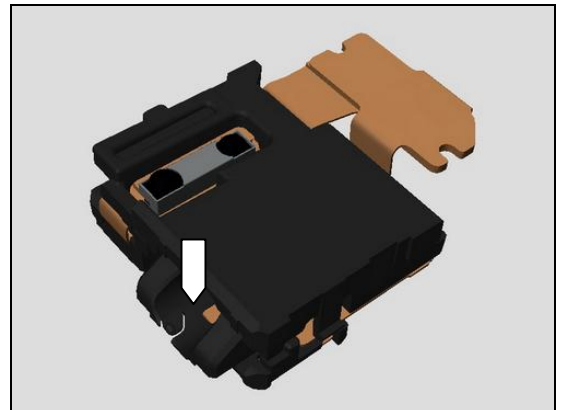


**Check:**

Inspect the FPC Assembly Top RoW.

**Action:**

1. If the FPC Assembly Top RoW is damaged – replace it.
2. Replace Main PBA.



## Problem Areas

### 1.29 SIM

#### 1.29.1 SIM not detected

**Check:**

Inspect the external port of the SIM card holder and check if a test SIM card can be properly inserted.

**Action:**

If dirty or clogged – clean the external port.



**Check:**

Inspect the SIM Tray.

**Action:**

1. If dirty – clean it.
2. If damaged – Replace it.

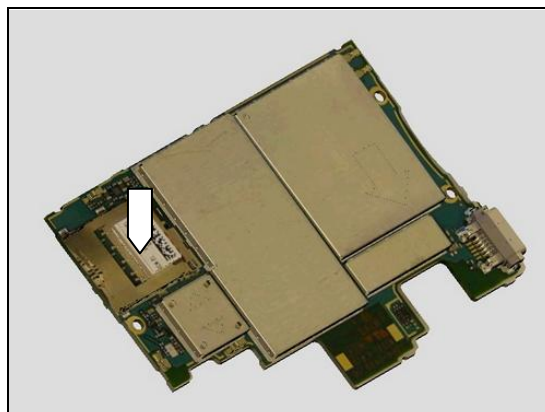


**Check:**

Inspect the SIM card holder on Main PBA.

**Action:**

1. If dirty or clogged – clean the holder.
2. Replace Main PBA.



#### 1.29.2 Incorrect SIM indicated

**Check:**

Check whether the phone is locked to a particular operator and whether the correct operator SIM is being used.

**Action:**

1. Use a proper operator SIM or test SIM.
2. Customize in Emma to the correct SI according label.
3. Replace Main PBA.





## Problem Areas

### 1.30 Charging (USB and Easy charger)

#### 1.30.1 Battery will not charge

**Check:**

Inspect the USB connector.

**Action:**

1. If dirty, clogged or oxidized – clean the connector.

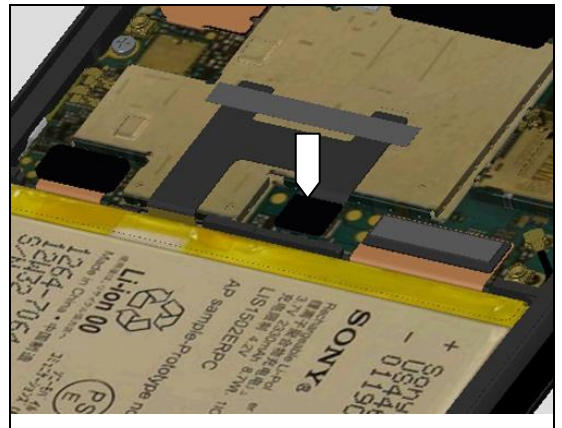


**Check:**

Inspect the Battery 2330.0 mAh BtB connector and battery BtB connector on Main PBA.

**Action:**

1. Remove and reconnect Battery's BtB connector, test charging and then test powering on the unit.
2. If not properly connected – disconnect and reconnect connectors.
3. If dirty or oxidized – clean connectors
4. If the Battery BtB contact on Battery 2330.0 mAh is damaged – replace Battery 2330.0 mAh.

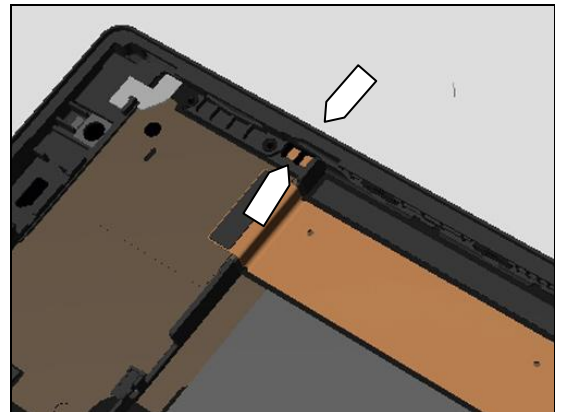


**Check:**

Inspect the Easy charger pads on Front assembly.

**Action:**

1. Remove and reconnect Battery BtB connector, test charging and then test powering on the unit.
2. If dirty or oxidized – clean pads
3. Replace Front Assembly.

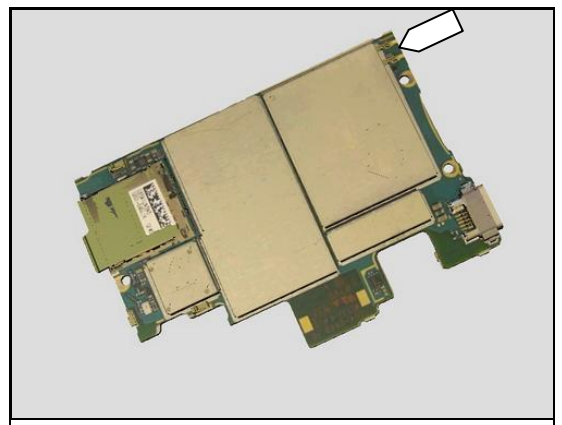


**Check:**

Inspect the Easy charger pins on the Main PBA.

**Action:**

1. If dirty or oxidized – clean the pin.
2. Replace Main PBA.



## Problem Areas

### 1.31 Data Communication

#### 1.31.1 Data transfer via System Connector fails

**Check:**

Inspect the USB connector.

**Action:**

1. If dirty, clogged or oxidized – clean the connector.
2. Replace Main PBA.



## Problem Areas

### 1.32 Network & Signal

#### 1.32.1 No/Poor signal

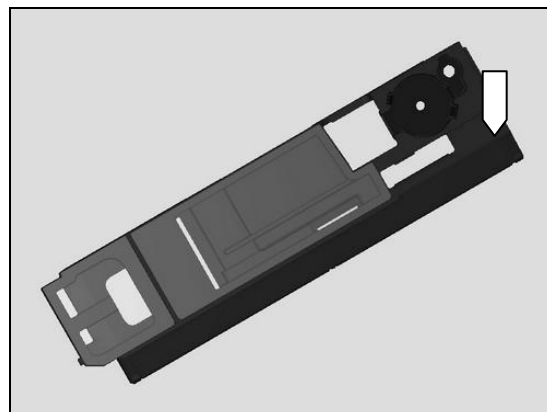
**Check:**

Inspect the main antenna on the Ant Main Flex RoW.



**Action:**

1. If the main antenna is damaged – replace the Ant Main Flex RoW.



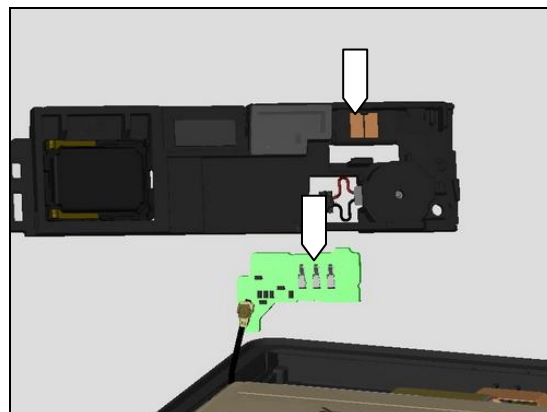
**Check:**

**Check:**

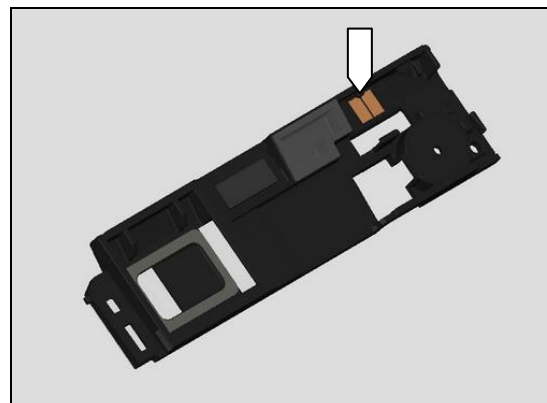
Inspect the main antenna contact pins on PBA Sub RoW and the contact pads on the Ant Main Flex RoW.

**Action:**

1. If dirty or oxidized – clean the pins and pads.



2. If the contact pads are damaged – replace the Ant Main Flex RoW.



## Problem Areas

3. If the pins are damaged – replace the PBA Sub RoW.

### Check:

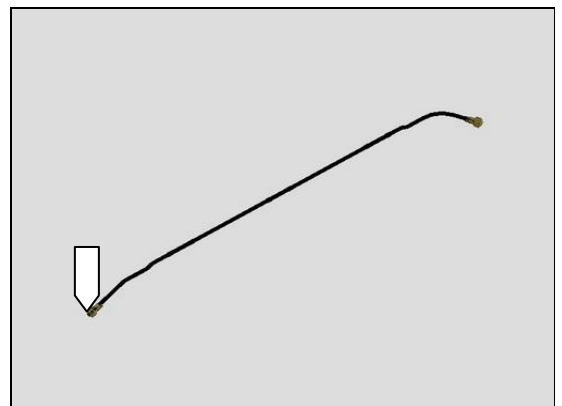
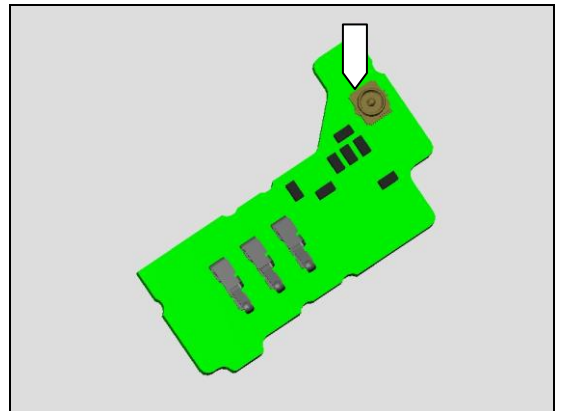
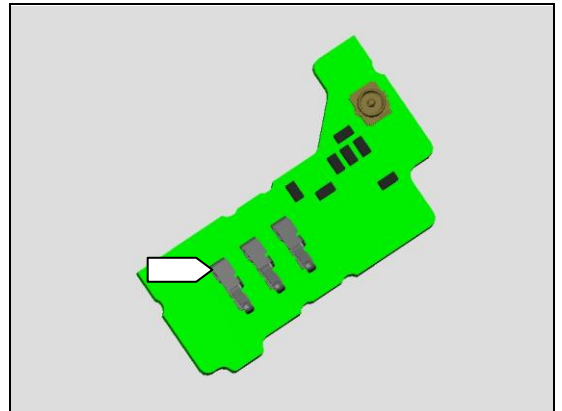
Inspect the connector of Cable RF Coax Cable, ASSY to PBA Sub RoW.

### Action:

1. If not properly connected – disconnect and reconnect it.

2. If the connector on the PBA Sub RoW is damaged – replace the PBA Sub RoW.

3. If the connector of Cable RF Coax Cable, ASSY is damaged – replace the Cable RF Coax Cable, ASSY.  
4. Replace Main PBA



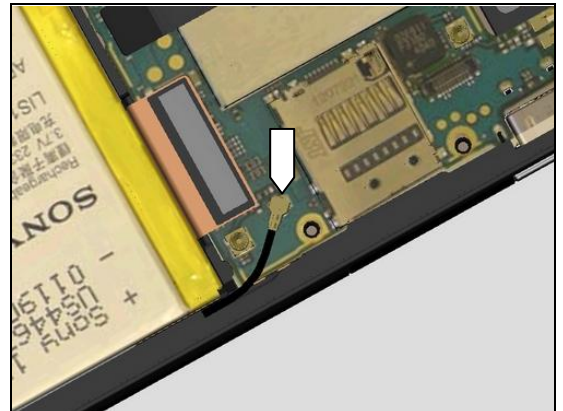
## Problem Areas

### Check:

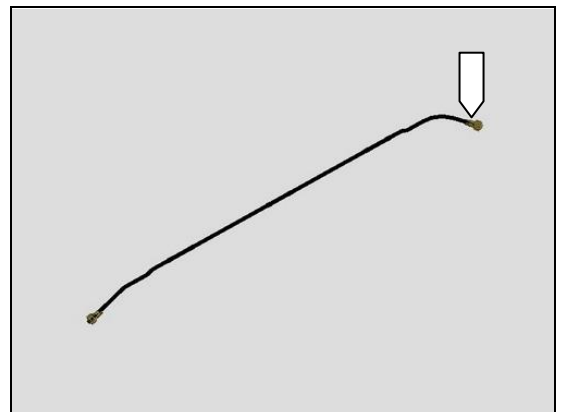
Inspect the connector of Cable RF Coax Cable, ASSY to main PBA.

### Action:

1. If not properly connected – disconnect and reconnect it.



2. If the connector of Cable RF Coax Cable, ASSY is damaged – replace the Cable RF Coax Cable, ASSY.
3. Replace Main PBA

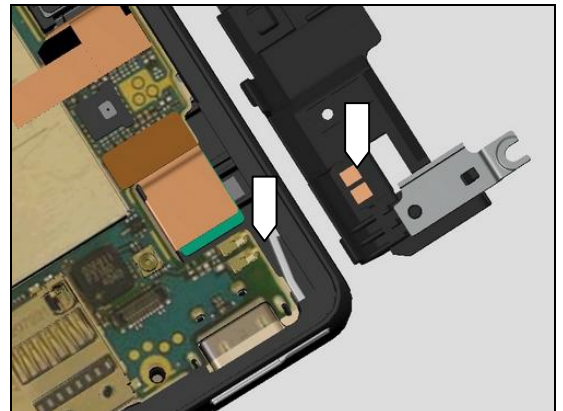


### Check:

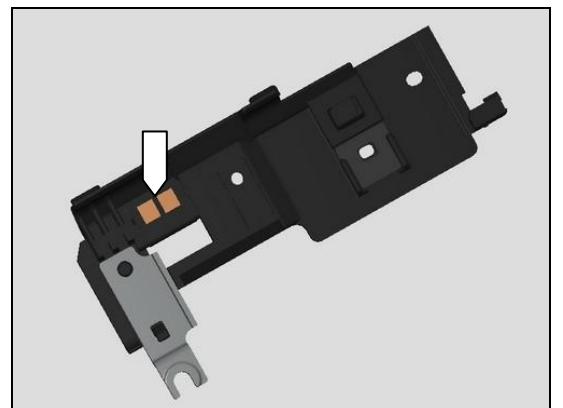
Inspect the contact pins on Main PBA and contact pads on Ant Diversity Flex RoW.

### Action:

1. If dirty or oxidized – clean the pins and pads.



2. If the contact pads are damaged – replace the Ant Diversity Flex RoW.
3. Replace Main PBA.



## 2 Revision History

Rev.	Date	Changes / Comments
1	2013-Feb-19	Initial release
2	2013-Feb-21	Update of Water Resistance chapter 1.21
3	2013-Feb-28	PDF improvement
4	2013-May-23	Update the chapter 1.6.1
5	2013-Jun-15	Updated chapter 1.10.1 and 1.10.2
6	2013-Jun-27	Update the chapter 1.1.1
7	2013-Jun-27	Update the Cover Page
8	2013-Sep-06	Update the chapter 1.6.1